

GLENCAIRN

MUSEUM

***DIGITAL
SUMMER
CAMP***



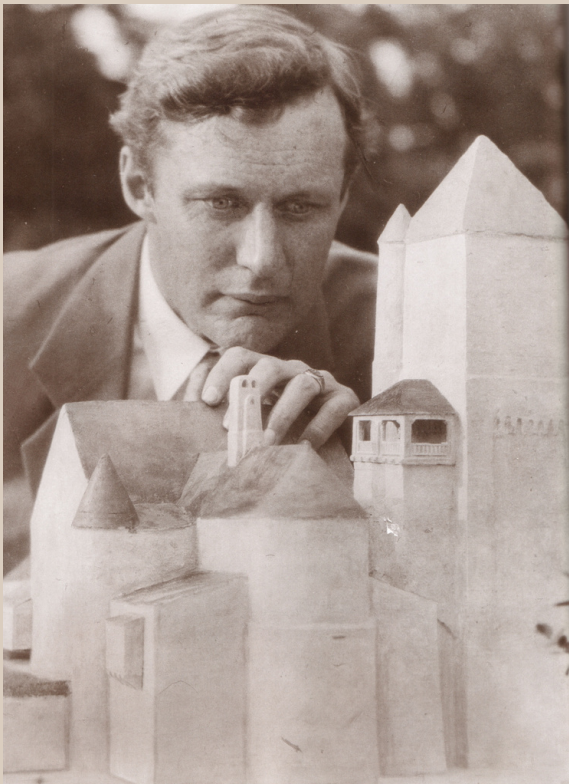
Week 1

GLENCAIRN'S HISTORY

For the first week of camp, you will learn about architecture and become a beginner architect! First, let's explore a little of Glencairn's history...

Glencairn was built during the 1930's (less than 100 years ago!) but it looks like a medieval castle. Glencairn was designed by Raymond Pitcairn as a home for his family. Its 90+ rooms not only housed him, his wife Mildred, their 9 children, and staff, but also his collection of medieval art.

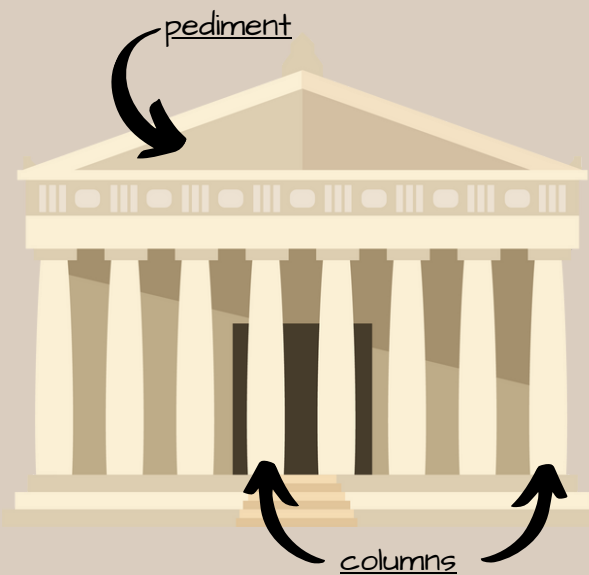
Raymond Pitcairn was not a trained architect, but Glencairn wasn't his first time designing a building. In fact, Raymond first became a beginner architect when he helped design his community's church, Bryn Athyn Cathedral.




Pitcairn preferred to use models rather than blueprints and floor plans. Models of Glencairn are what helped him bring vision to life. Glencairn's design was influenced by the buildings of the Middle Ages. Many skilled craftsmen were involved in its construction. If you were to build your own dream home, what would it look like?

STYLES OF ARCHITECTURE

This week, you get to design your dream home! Like Raymond Pitcairn, you will build a model. To be a good architect, it's important to know about different styles of architecture. Before you build your dream house, let's learn a bit about some architectural styles that have been used throughout history. Be sure to think about what style you will use to design your home!



 Click on the building to learn about different types of Greek columns!

CLASSICAL


Classical architecture is found in buildings that were built by or are inspired by the Ancient Greeks and Romans. Classical buildings often have **columns** and **pediments**. Greek and Roman buildings were often decorated with sculptures that told the myths and stories of these two cultures. These buildings were once painted, but when people started to copy them in later years, they preferred the look of their plain limestone or white marble walls.

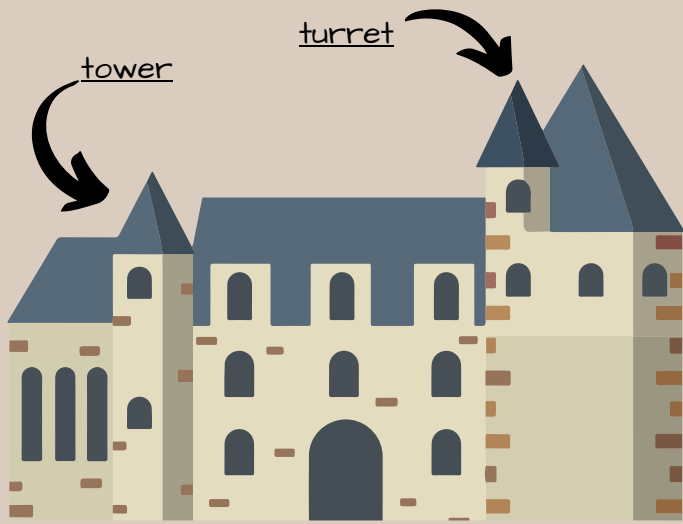
EAST ASIAN

The traditional styles of buildings in Asia have been shaped by philosophies and religions such as Buddhism, Hinduism, and Shintoism. Chinese, Korean, and Japanese traditional architecture is usually made of wood. **Overhanging eaves** on the roof are a famous feature of East Asian architecture. In Japan, moveable shoji walls allow for spaces to be opened up to other rooms or outside. Japanese architecture influenced many Modern architects in Europe and America.

overhanging eaves



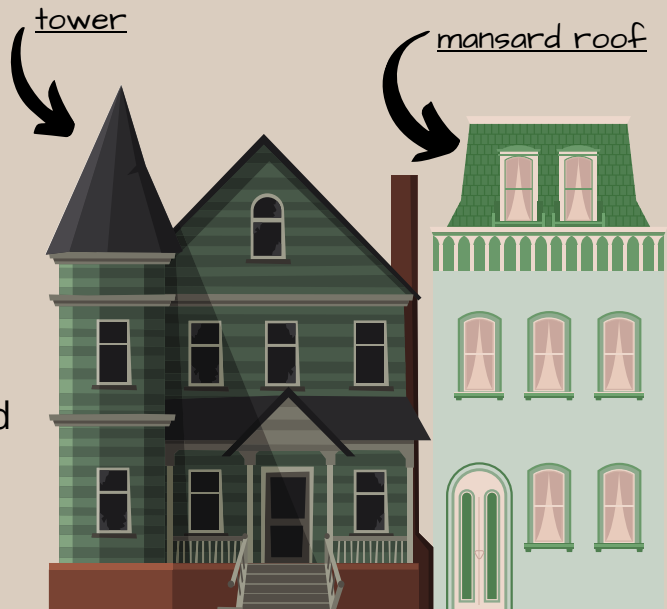
 Click on the building to learn about the architectural styles of Asia



Click the castle to see how medieval architecture has inspired the magical world of Disney!

VICTORIAN

In the 1800's a style of architecture spread throughout the world that was influenced by medieval Western Europe. This style is named after the British Queen Victoria. Many cities and towns were built with Victorian buildings. It is common for these homes to have **mansard roofs**, **towers** and turrets, porches, and lots of wooden decoration (often called gingerbread).



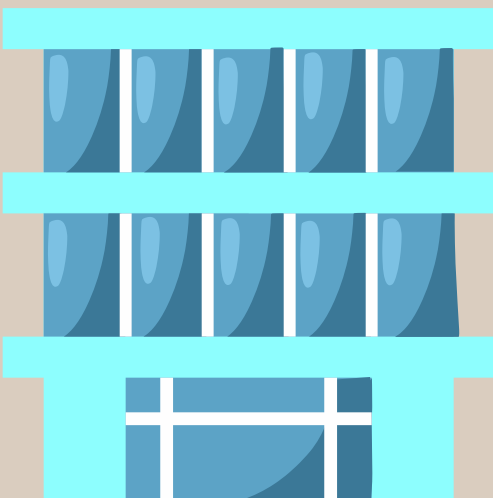
Click the houses to explore the Spruce Hill neighborhood of West Philadelphia and Ocean Grove, New Jersey to see examples of Victorian architecture not far from Glencairn Museum!

MODERNISM

In the early 1900's new building materials and industrial technology gave architects the chance to experiment with new types of architecture. Glass, steel, and concrete were often used on many buildings. This style, known as modernism, spread across the world because of its ability to fit into almost any cultural setting.



Check out this famous 1929 modernist building, the Barcelona Pavilion!



Activity: BECOME AN ARCHITECT

Just like Raymond Pitcairn, you have the chance to create your own dream home! And just like Glencairn, your "dream home" will become a museum over the next few weeks. We'll be making a model just like Raymond did, and your model can be inspired by one (or more!) of the architectural styles you learn about. Unleash your creativity to design a home that reflects your unique vision!

Instructions:

1. Think about what you would want your dream home to look like. Is there a style you learned about that stands out to you?

2. Gather Materials:

- Collect household objects for your model: boxes, containers, sticks, etc.
- Use fabric or paper to represent building materials with different textures and surfaces, like stone or wood.

3. Build Your Dream Home Model:

- Cut, glue, and arrange objects to bring your design to life.
- Add decorations and customize your home with markers or paint.

4. Present Your Dream Home:

- Take pictures or record a video showcasing your model.
- Share your ideas, inspiration, and unique features!
- Share images of your creation with us at Glencairn Museum!

Note: Ask for adult help when using sharp objects or things like hot glue. Have fun and be creative!

Step-by-Step Directions

Our example is a home inspired by Classical architecture. You can choose whatever style and level of detail you would like. Below are some instructions for how you could create your model!

1. Find or make a box shape with a lid so that you can have a floor with walls.



2. Use extra cardboard to create a roof for your home. For the Classical style, we chose a simple roof design with a pediment. **You want your roof to be removable**, so that you can put your museum objects inside over the next few weeks!



3. Cut cardboard pieces for different details. We cut four columns to hold up the roof of our model, creating a porch area. Get creative and think about different things that fit the style of your home!



4. Add on details using tape, a stapler, or glue. Ask for adult help with hot glue!



4. Create walls to separate the space into different rooms.

Think about what each room might be used for. What cool art and objects could each room display once it becomes a museum?



5. Using paper, markers, or paint add finishing touches to your model. Draw on decorative details!



Put your model in a safe place for next week!